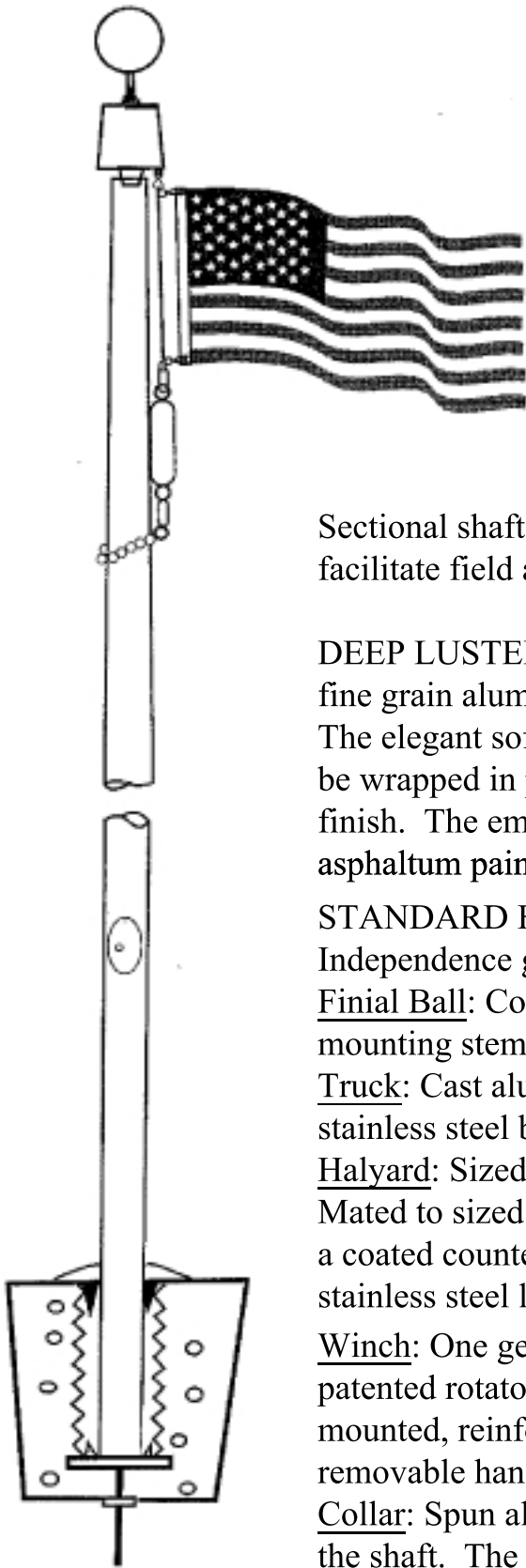


# Independence Ground Set Cone Tapered Aluminum Flagpoles



GENERAL: CONCORD Independence winch-type concealed halyard flagpoles are made from all new seamless 6063-T6 aluminum tubing, having a uniform conical taper of approximately 1" in every 5'6". Overall lengths to 38'6" can be fabricated in one piece. Overall assembled lengths of 28'0" to 38'6" can be fabricated in two sections for easier shipping. Assembled lengths of 44' & 49'6" are produced in 2 sections. Assembled lengths of 55' to 88' are produced in 3 sections.

Sectional shafts are factory fitted with a self-aligning internal sleeve which will facilitate field assembly without welding.

DEEP LUSTER FINISH: All Concord Flagpoles shall be highly polished with fine grain aluminum oxide cloths resulting in a high quality deep luster finish. The elegant soft sheen finish remains maintenance free. Each shaft section shall be wrapped in protective paper and shipped in a hard fiber tube to protect the finish. The embedded portion of the shaft shall be given a heavy coat of asphaltum paint.

STANDARD FITTING: The fittings listed are standard for all Concord Independence ground mounted flagpoles:

Finial Ball: Constructed of #14 ga. aluminum with a flush seam, threaded mounting stem and gold anodized finish. Ball is sized to match shaft diameter.

Truck: Cast aluminum revolving, concealed halyard truck complete with 26 stainless steel ball bearings and a stainless steel sheave.

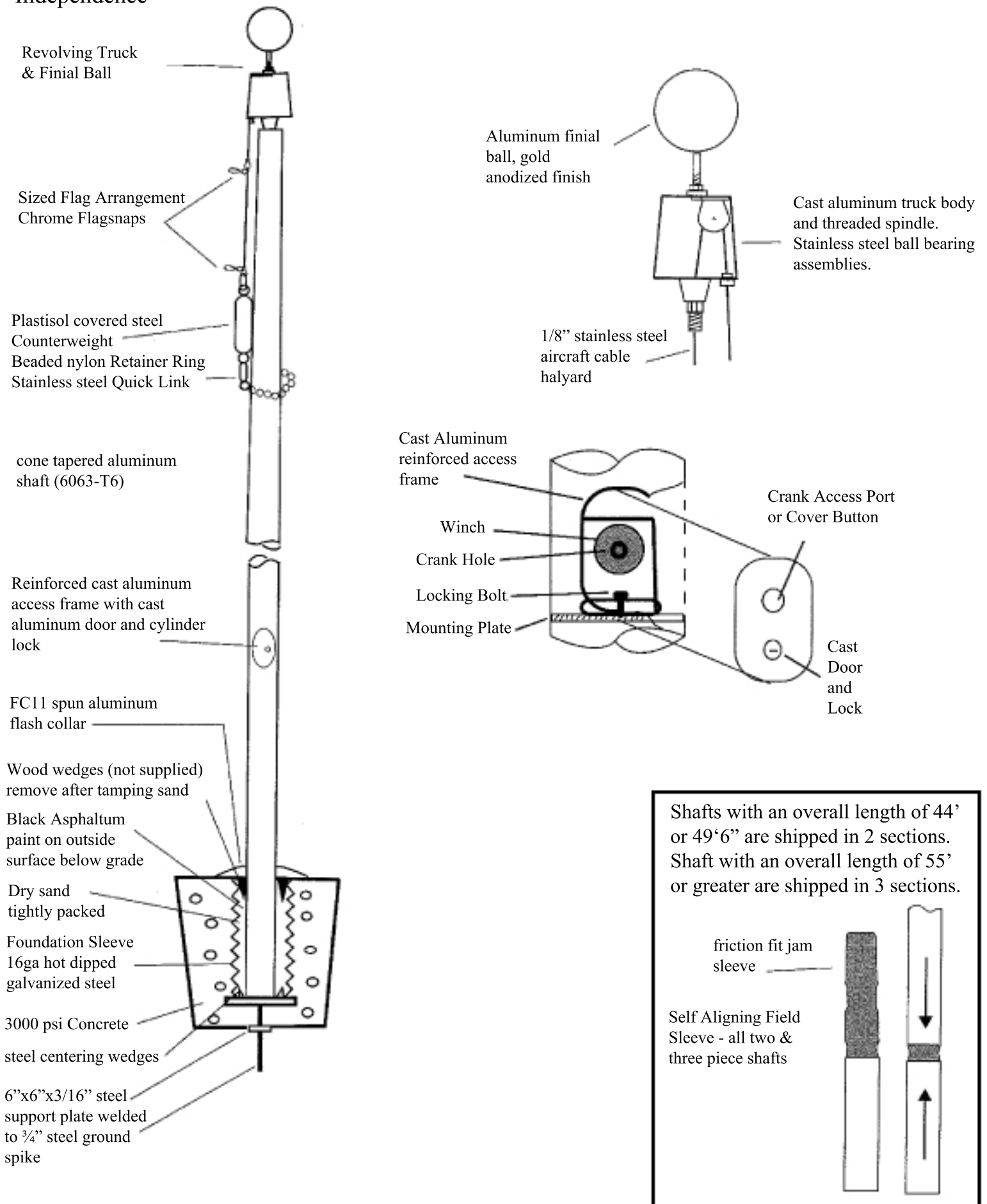
Halyard: Sized stainless steel concealed halyard assembly with internal swivel. Mated to sized stainless steel cable flag arrangement, two chrome swivel snaps, a coated counterweight, beaded nylon ball over steel cable retainer ring and stainless steel links.

Winch: One gearless stainless steel direct drive winch internally mounted on a patented rotator plate system. Accessed behind a locking door fitted to a flush mounted, reinforced, cast aluminum frame. The which is operated with a removable handle inserted through the access door.

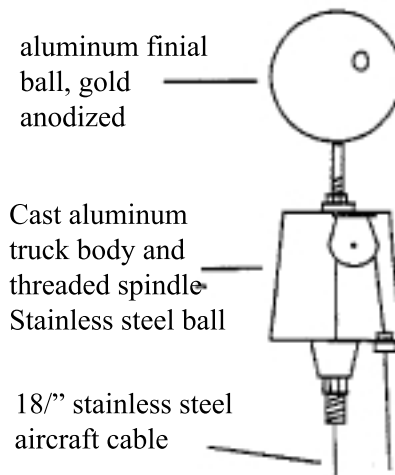
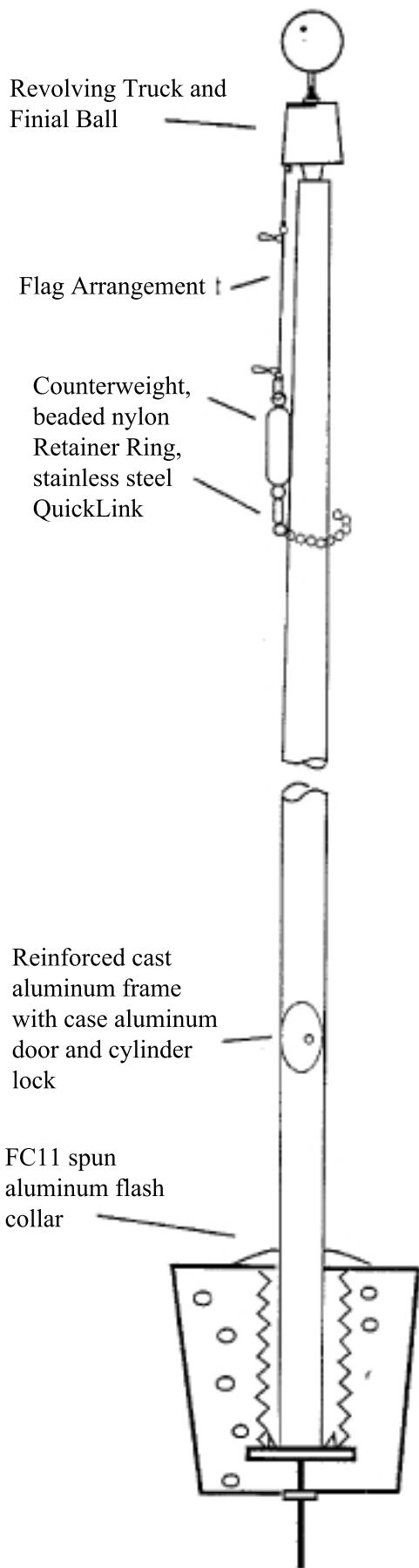
Collar: Spun aluminum type FC11 ornamental flash collar finished to match the shaft. The diameter of the collar to be at least 1" greater than the fountain sleeve.

Fountain Sleeve: Fabricated from #16 ga. galvanized steel, with a base plate whose square dimension is at least the i.d. of the sleeve plus 3". A 6" square set plate is attached to the  $\frac{3}{4}$ " steel ground spike at least 6" below the base plate. The ground spike is not less than 18" long.

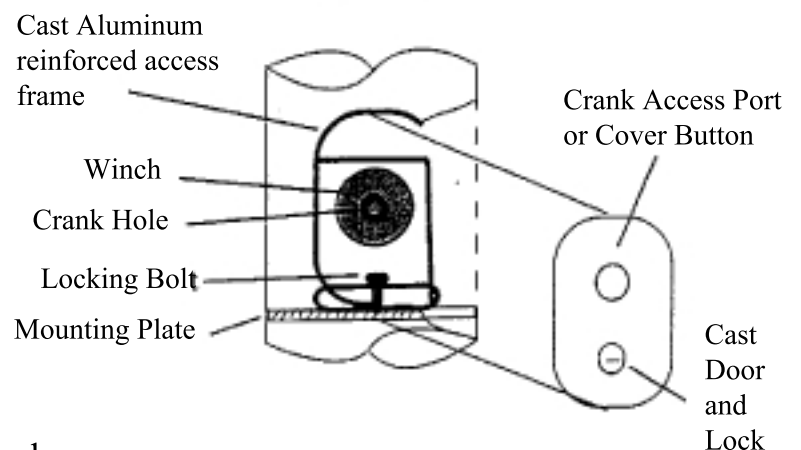
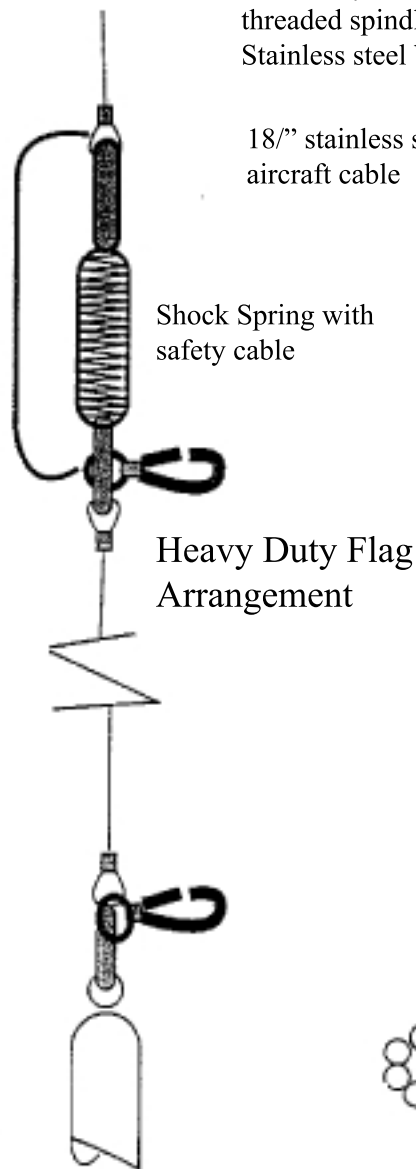
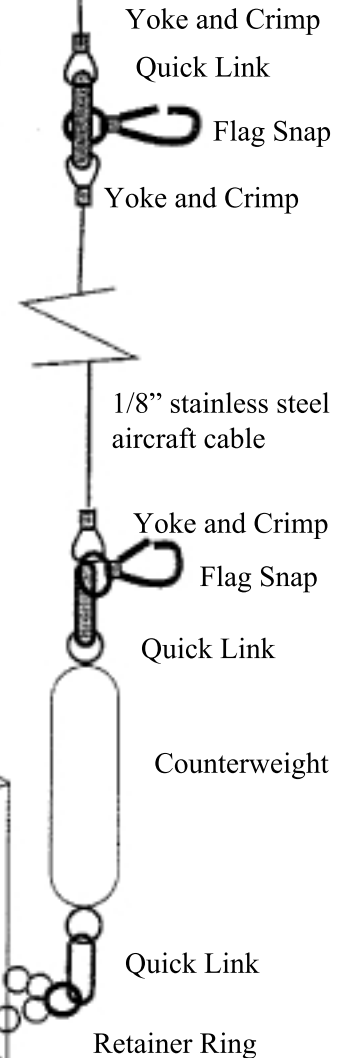
# Independence



**Warning:** Extreme caution should be exercised when installing flagpoles near overhead powerlines or in the vicinity of buried cables.



### Standard Flag Arrangement



**Warning:** Do not allow concrete to contact aluminum shaft. Extreme caution should be exercised when installing flagpoles near overhead powerlines, or in the vicinity of buried cables.

# CONCEALED HALLYARD SHAFTS

HEIGHT		DIAMETER		WALL THICK	LENGTH		SHIP SEC	UNFLAGGED WIND SPEED		FLAGGED WIND SPEED		
EXP	LOA	BUTT	TOP		TAPRO	STGHT		CONSTANT	W/GUST FACTOR	FLAG SIZE	CONSTANT	W/GUST FACTOR
25'	28'0"	6.0"	3.5"	.156"	17'3"	10' 9"	1	195	253	4' x 6'	120	155
25'	28'0"	6.0"	3.5"	.168"	17'3"	10' 9"	1	213	277	4' x 6'	120	155
30'	33'0"	6.0"	3.5"	.156"	17'3"	15' 9"	1 or 2	147	191	5' x 8'	90	117
30'	33'0"	6.0"	3.5"	.168"	17'3"	15' 9"	1 or 2	170	221	5' x 8'	100	130
35'	38'6"	6.0"	3.5"	.156"	20'0"	18' 6"	1 or 2	94	122	5' x 8'	70	91
35'	38'6"	7.0"	3.5"	.156"	20'0"	18' 6"	1 or 2	138	179	5' x 8'	90	117
35'	38'6"	7.0"	3.5"	.168"	20'0"	18' 6"	1 or 2	154	200	5' x 8'	100	130
40'	44'0"	7.0"	3.5"	.156"	22'9"	21' 3"	2	96	125	6' x 10'	70	91
40'	44'0"	8.0"	3.5"	.168"	22'9"	21' 3"	2	150	195	6' x 10'	100	130
45'	49'6"	8.0"	3.5"	.168"	32'3"	16' 10"	2	122	159	6' x 10'	80	104
50'	55'0"	8.0"	3.5"	.168"	37'2"	17' 10"	3	93	121	8' x 12'	70	91
50'	55'0"	10.0"	4.0"	.168"	37'2"	17' 10"	3	141	183	8' x 12'	100	130
60'	66'0"	10.0"	4.0"	.168"	44'6"	21' 6"	3	100	130	10' x 15'	70	91
60'	66'0"	10.0"	4.0"	.250"	44'6"	21' 6"	3	129	167	10' x 15'	80	104
60'	66'0"	12.0"	4.4"	.250"	60'0"	6' 0"	3	155	202	10' x 15'	100	130
70'	77'0"	10.0"	4.0"	.312"	52'0"	25' 0"	3	106	137	12' x 18'	70	91
70'	77'0"	12.0"	3.6"	.250"	66'6"	10' 6"	3	124	161	12' x 18'	90	117
80'	88'0"	12.0"	4.0"	.375"	77'6"	10' 6"	3	131	170	15' x 25'	90	117

Refer to Windspeed Chart information and caution on page 3

## Standard Recommended Foundation Dimensions

Exp Hght	A	B	C
20'	3'6"	24"	30"
25'	3'6"	24"	30"
30'	3'6"	24"	30"
35'	4'0"	30"	36"
40'	4'6"	36"	42"
45'	5'0"	42"	48"
50'	5'8"	42"	48"
60'	6'10"	42"	48"
70'	8'0"	48"	60"
80'	9'0"	48"	60"

Warning: Do not allow concrete to contact aluminum shaft. Extreme caution should be exerised when installing flagpoles near overhead powerlines, or in the vicinity of buried cables.