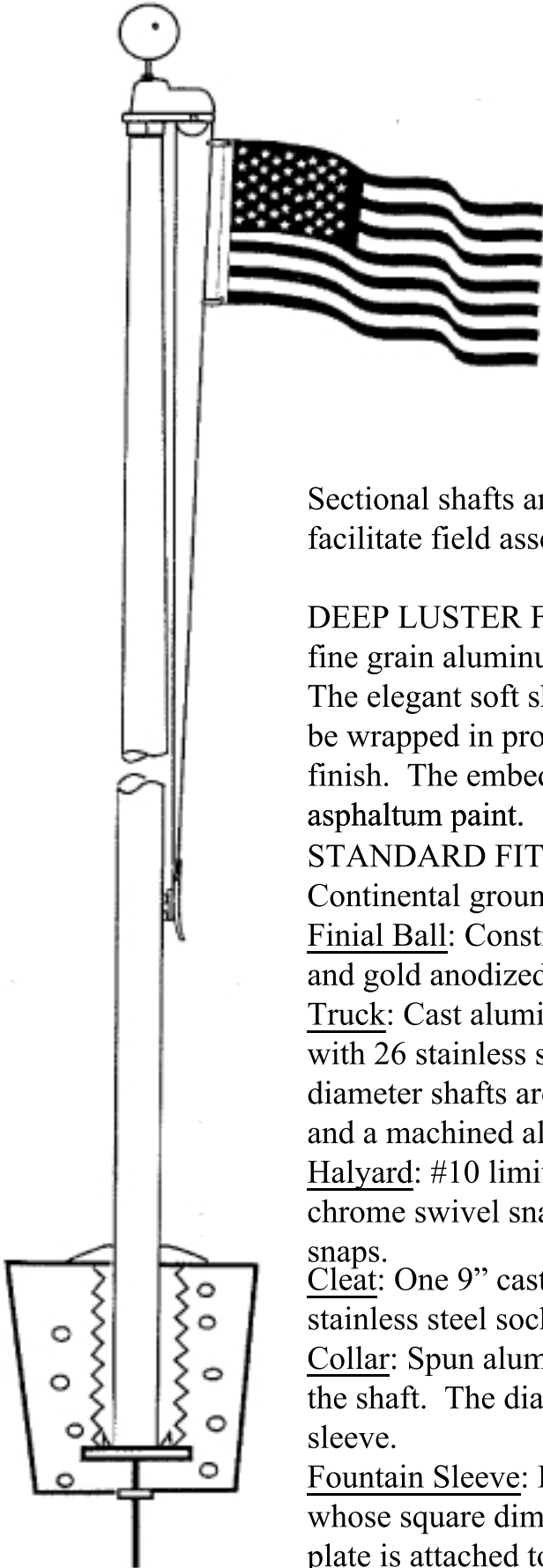


Continental Ground Set Cone Tapered Aluminum Flagpoles



GENERAL: CONCORD Continental Flagpoles are made from all new seamless 6063-T6 aluminum tubing, having a uniform conical taper of approximately 1" in every 5'6". Overall lengths to 38'6" can be fabricated in one piece. Overall assembled lengths of 287'6" to 38'6" can be fabricated in two sections for easier shipping. Assembled lengths of 44' & 49'6" are produced in 2 sections. Assembled lengths of 55' to 88' are produced in 3 sections.

Sectional shafts are factory fitted with a self-aligning internal sleeve which will facilitate field assembly without welding.

DEEP LUSTER FINISH: All Concord Flagpoles shall be highly polished with fine grain aluminum oxide cloths resulting in a high quality deep luster finish. The elegant soft sheen finish remains maintenance free. Each shaft section shall be wrapped in protective paper and shipped in a hard fiber tube to protect the finish. The embedded portion of the shaft shall be given a heavy coat of asphaltum paint.

STANDARD FITTING: The fittings listed are standard for all Concord Continental ground mounted flagpoles:

Finial Ball: Constructed of #14 ga. aluminum with a flush seam, threaded rod and gold anodized finish.

Truck: Cast aluminum, single halyard* revolving, non-fouling truck complete with 26 stainless steel ball bearings and a 2-3/8" cast nylon sheave. 10" and 12" diameter shafts are fitted with a HD single halyard truck with sealed bearing sets and a machined aluminum sheave.

Halyard: #10 limited stretch braided white polypropylene halyard fitted with two chrome swivel snaps. 10" & 12" shafts equipped with stainless steel swivel snaps.

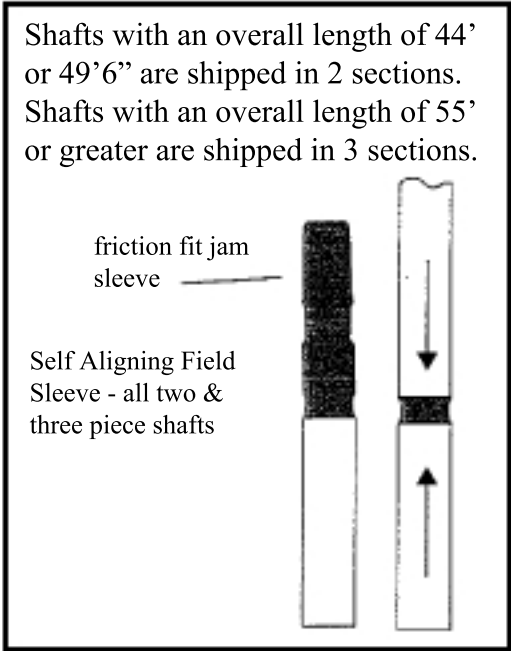
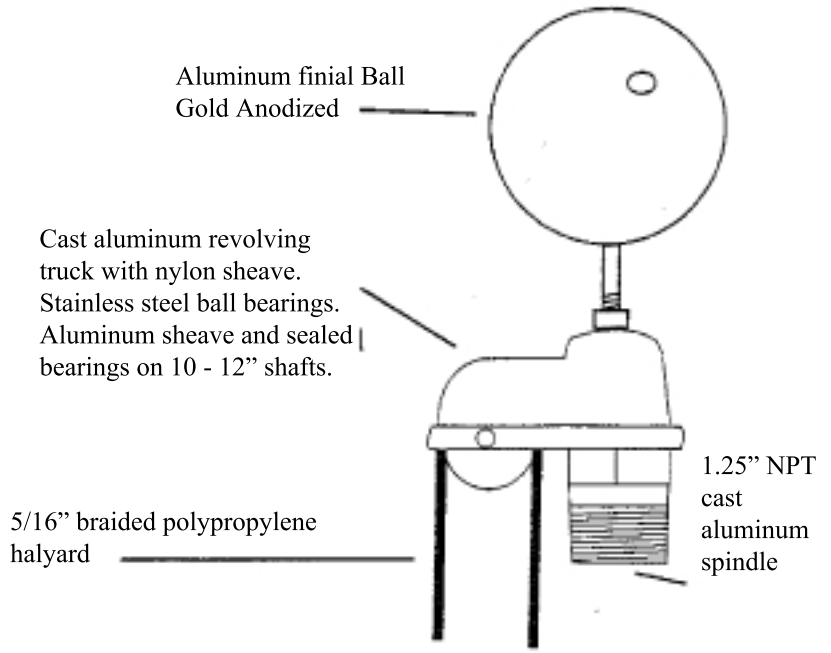
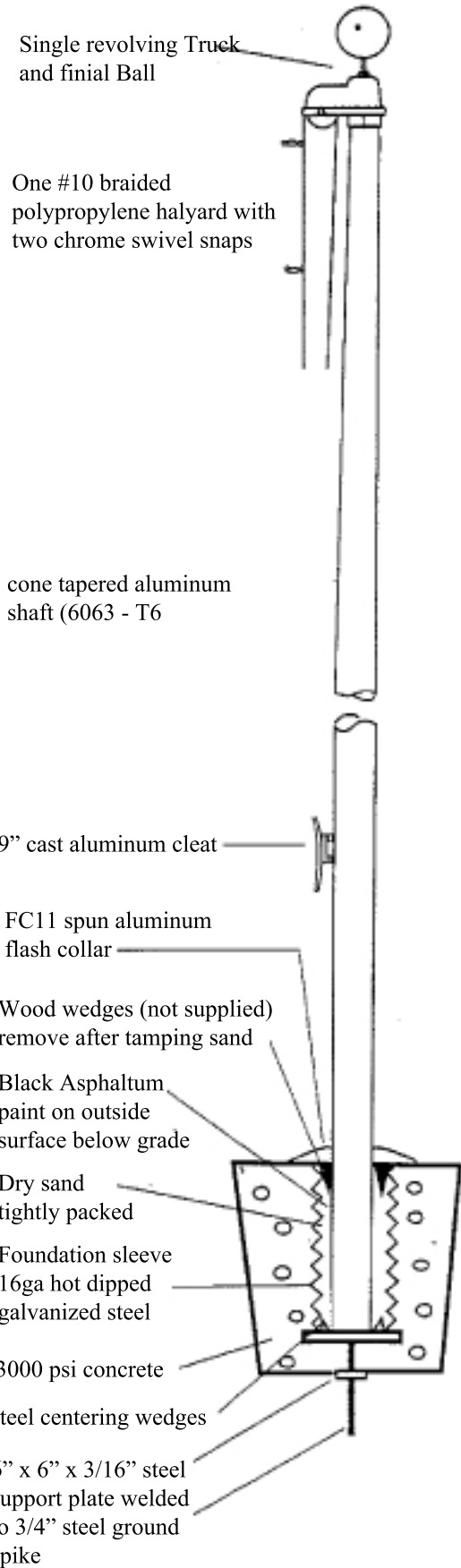
Cleat: One 9" cast aluminum cleat with finish to match shaft. Secured with two stainless steel socket head bolts (included).

Collar: Spun aluminum type FC11 ornamental flash collar finished to match the shaft. The diameter of the collar to be at least 1" greater than the fountain sleeve.

Fountain Sleeve: Fabricated from #16 ga. galvanized steel, with a base plate whose square dimension is at least the i.d. of the sleeve plus 3". A 6" square set plate is attached to the 3/4" steel ground spike at least 6" below the base plate. The ground spike is not less than 18" long.

*double halyard systems available on all models

Continental



Warning: Extreme caution should be exercised when installing flagpoles near overhead powerlines, or in the vicinity of buried cables.

Continental - Standard Dimensions

Exp Ht	Overall Length	Diamters Butt	Top	Wall Thick	Length Stght	Taper	Ball Size	Ship Section	Sleeve Diam	Flag Size
20'	23'0"	4"	2"	.125"	13'0"	10'0"	4"	1	8"	4'x6'
20'	23'0"	5"	3"	.125"	11'4"	11'8"	5"	1	8"	4'x6'
20'	23'0"	5"	3"	.188"	12'0"	11'0"	5"	1	8"	4'x6'
25'	28'0"	5"	3"	.125"	17'0"	11'0"	5"	1 or 2	8"	4'x6'
25'	28'0"	5"	3"	.156"	13'0"	15'0"	5"	1 or 2	8"	4'x6'
25'	28'0"	5.5"	3.5"	.188"	17'0"	11'0"	6"	1	10"	4'x6'
25'	28'0"	6"	3.5"	.156"	10'9"	17'3"	6"	1 or 2	10"	4'x6'
25'	28'0"	6"	3.5"	.188"	10'9"	17'3"	6"	1 or 2	10"	4'x6'
30'	33'0"	5"	3"	.125"	15'9"	17'3"	5"	1 or 2	8"	5'x8'
30'	33'0"	5"	3"	.156"	15'9"	17'3"	5"	1 or 2	8"	5'x8'
30'	33'0"	6"	3.5"	.156"	15'9"	17'3"	6"	1 or 2	10"	5'x8'
30'	33'0"	6"	3.5"	.188"	15'9"	17'3"	6"	1 or 2	10"	5'x8'
35'	38'6"	5"	3"	.156"	20'0"	18'6"	5"	1 or 2	8"	5'x8'
35'	38'6"	6"	3.5"	.156"	20'0"	18'6"	6"	1 or 2	10"	5'x8'
35'	38'6"	7"	3.5"	.156"	20'0"	18'6"	8"	1 or 2	10"	5'x8'
35'	38'6"	7"	3.5"	.188"	20'0"	18'6"	8"	1 or 2	10"	5'x8'
40'	44'0"	7"	3.5"	.156"	21'6"	22'6"	8"	2	10"	6'x10'
40'	44'0"	8"	3.5"	.188"	14'11"	29'1"	8"	2	12"	6'x10'
45'	49'6"	8"	3.5"	.188"	16'10"	33'8"	8"	2	12"	6'x10'
50'	55'0"	8"	3.5"	.188"	18'1"	36'11"	8"	3	12"	8'x12'
50'	55'0"	10"	4"	.188"	18'1"	36'11"	10"	3	15"	8'x12'
60'	66'0"	10"	4"	.188"	21'9"	44'3"	10"	3	15"	10'x15'
60'	66'0"	10"	4"	.250"	21'9"	44'3"	10"	3	15"	10'x15'
60'	66'0"	12"	4.4"	.250"	6'0"	60'0"	12"	3	15"	10'x15'
70'	77'0"	10"	4"	.312"	25'3"	51'9"	10"	3	15"	12'x18'
70'	77'0"	12"	3.5"	.250"	10'6"	66'6"	12"	3	15"	12'x18'
80'	88'0"	12"	3.9"	.375"	10'6"	77'6"	12"	3	15"	15'x25'

Standard Recommended Foundation Dimensions

Exp Hght	A	B	C
20'	3'6"	24"	30"
25'	3'6"	24"	30"
30'	3'6"	24"	30"
35'	4'0"	30"	36"
40'	4'6"	36"	42"
45'	5'0"	42"	48"
50'	5'8"	42"	48"
60'	6'10"	42"	48"
70'	8'0"	48"	60"
80'	9'0"	48"	60"

Wood wedges (not supplied) remove after tamping sand

Black Asphaltum paint on outside surface below grade

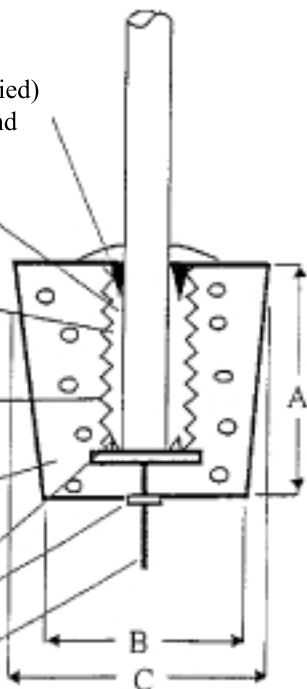
Dry sand tightly packed

Foundation Sleeve 16ga hot dipped galvanized steel

3000 psi Concrete

steel centering wedges

6"x6"x3/16" steel support plate welded to 3/4" steel ground spike



Warning: Do not allow concrete to contact aluminum shaft. Extreme caution should be exercised when installing flagpoles near overhead powerlines, or in the vicinity or buried cables.